



**FRESENIUS
KABI**

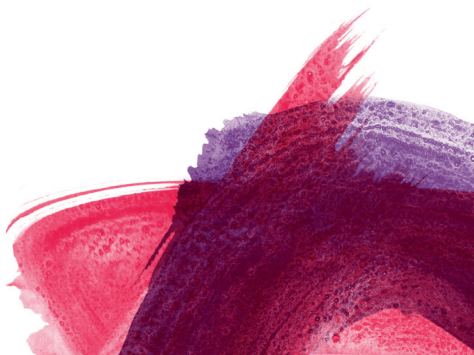
caring for life

Application Overview

Lovo

Immunomagnetic
selection prep

Available with
Lovo Software 3.0

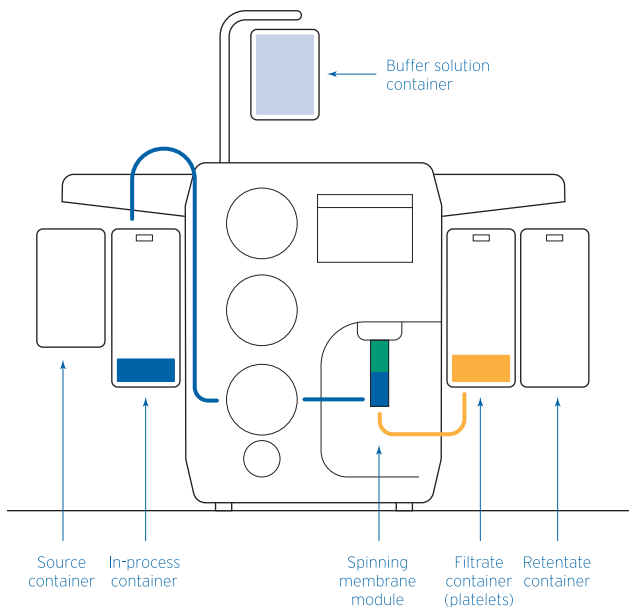


With the option to incorporate mid-procedure, timed incubation in your protocol design and new accessories – including a vial access device, Lovo pouch kit, and Lovo valve and filter kit – Lovo Software 3.0 automates immunomagnetic selection prep, simplifying and speeding your processing.

Platelet removal, bead addition, bead incubation, bead removal, and cell re-concentration can now all be completed in a single closed system while the in-process container remains on the Lovo device.

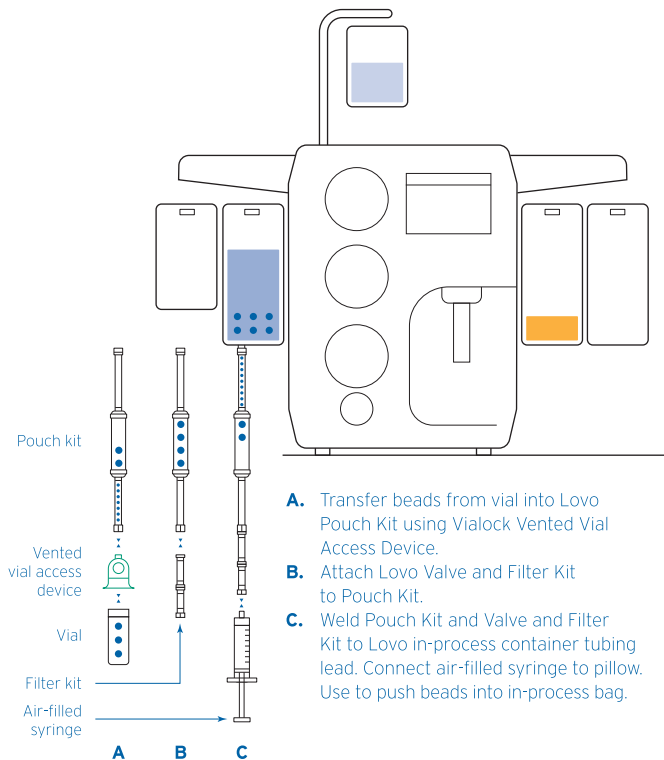
1. Initial wash

Remove platelets and resuspend in preferred buffer solution.



2. Bead addition on Lovo

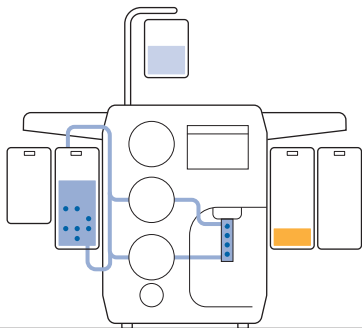
Add magnetic beads to the in-process container using ancillary components.



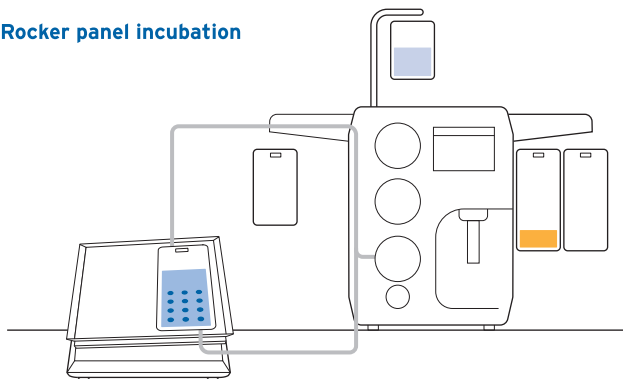
3. Bead incubation

Incubate magnetic beads in one of two ways.

Circulating incubation

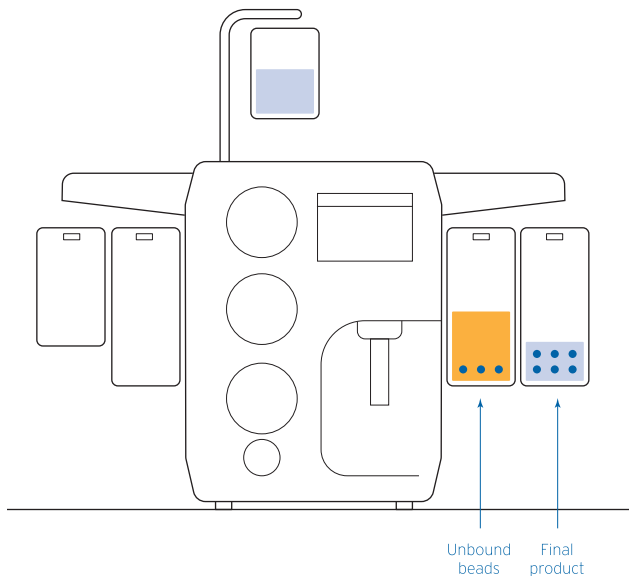


Rocker panel incubation



4. Final wash

Remove unbound beads, concentrate cells, and resuspend in the desired buffer solution.



† The LOVO Cell Processing system is for laboratory use only. Unless the user has obtained advance clearance or approval from the appropriate regulatory agency, cells processed on this system are not intended for diagnostic purposes, direct transfusion, or for use in the production of therapeutic products or vaccines for clinical use. For applications requiring regulatory clearance or approval, users may request the required LOVO technical documentation from Fresenius Kabi to support their submissions.

Fresenius Kabi USA, LLC
Three Corporate Drive
Lake Zurich, Illinois 60047

© 2017 Fresenius Kabi USA
#3324C